



# STVS MODULAR

Professional on modular handrail systems

[HTTPS://WWW.STVS.CO/](https://www.stvs.co/)

261-263 Phan Xich Long Street, Ward2, Phu  
Nhuan District, Hochiminh city, 700000,  
Vietnam  
Phone: +84 938770765

**STV<sup>9</sup>**

**M O D U L A R**

## WHY STVS MODULAR?

- STVS is professional manufacturer of modular safety handrail and railing fence systems. The products are pre-engineered and fabricated at factory then assemble at site without welding and painting at site.
- Unlike tradition welding method. STVS modular pre-engineered systems is designed to have most effective design, reduce site work.
- The handrail design was tested at SGS Vietnam. The result pass all the the quest of OSHA, and BS EN ISO 1422 standard that give high safety to user.
- STVS modular can give design support in CAD and 3Ds drawing, erection drawing to do complex projects
- Full installation and project management service help customer free of mind to focus on their main bustiness.
- **STVS warranty 5 years up to C5 condition for Hot dip galvanized finishing.**
- **Smart modular design help reduce installation cost at site and protect customer profit.**

## STVS MODULAR WORKING AREA

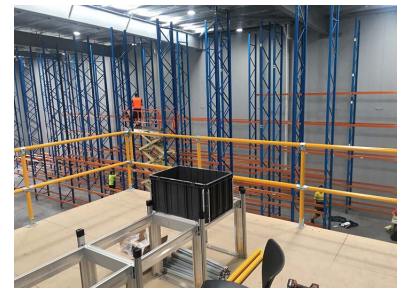
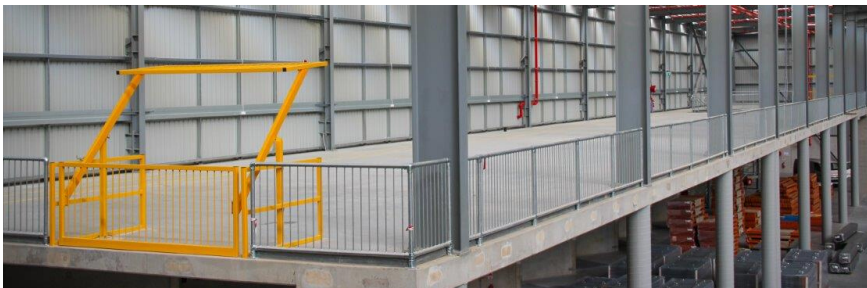
- FACTORY
  - Stair case handrail
  - Walk way handrail
  - Mezzanine handrail
  - Rooftop safety handrail
- WATER TREATMENT
  - Water treatment tank
- BUILDING
- MINING
- SCHOOL
- PUBLIC AREA
  - Pedestrian railing
  - Balustrading



## STAIR CASE



## PLATFORM HANDRAIL



## WATER TREATMENT HANDRAIL



## BALCONY HANDRAIL



## WALKWAY GUARDRAIL



## KEY FEATURE



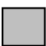



- Compliance to OSHA 1901.29 standard
- High safety for user.
- UV resistant
- Cost effective
- Time efficient
- Modular flexibility
- No-weld assembly
- Compact pack delivery and move at site
- Reduce corrosion
- Color option
- Heavy duty powder coating paint

## COMPLIANCE

Hot dip galvanized of clamp fitting follow BS EN ISO 1461 standard

Hot dip galvanized of steel pipe follow ASTM A 123 standard

Steel pipe accroding with BS 1387-1985 (EN10255)

	Specification
Compliance	OSHA 1910.29
Material	<b>Steel</b> <b>SUS 304</b> (straight handrail with D49mm - coming soon) <b>SUS 316</b> (straight handrail D49mm - coming soon)
Height	1050mm for landing handrail 950mm for staircase handrail
Toe plate (If have)	@STVS BANANA STEM toe plate systems (Aluminum)
Horizontal bar quantity	1/2/3/4
Stanchions distant	Max 2000mm
Horizontal bar pipe section	D42.2x3.2mm (TYP) D42.2x2.0mm D48.1x3.2mm (for straight handrail)
Stanchion pipe section	D42.2x3.2mm (TYP) D42.2x2.0mm D48.1x3.2mm (for straight handrail)
Clamp fittings	Product is made by black heart malleable iron Material SUS 304 and SUS 316 is applied for high corrosion area like seaside, corrosion chemical with D49 handrail. (for straight handrail only)
	 <b>G0:</b> Black steel + PE powder coating paint  <b>G1:</b> Pre-Galvanized steel + PE powder coating paint  <b>G2:</b> Hot dip galvanized  <b>G3:</b> Hot dip galvanized + PE powder coating paint (for pipe 3.2mm thickness only)  <b>SS304:</b> Stainless steel 304 (For straight handrail D49 only - coming soon)  <b>SS316:</b> Stainless steel 316 (For straight handrail D49 only - coming soon)

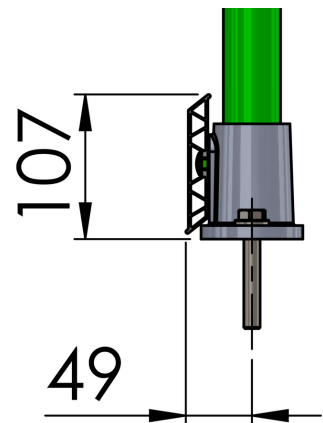
**STVS MODULAR****® BANANA STEM TOE PLATE SYSTEM**

STVS unique aluminum toeplate design. This design follow BS-EN ISO 14122 standard.

Extract: 7.1.7 A toe-plate with a minimum up stand of 100 mm shall be placed 10 mm maximum from the walking level and the edge of the platform.

The idea from banana stem structure give super strong toeplate also allows quick and easy installation. No drilling or welding, the structure allows for secure attachment with no exposed fasteners. Banana stem structure provides rigid non-buckling performance with the benefit of light weight, easy handling

The toeplate with aluminum with many option of powder coating paint finishing give high quality performance of appearance and corrosion resistant.





STVS is partner of Acusafe's KAG top rail is the most tested and certified handrail in the world. With ALS global mechanical tests resulting in the KAG tube outperforming standard tube by a combined 20% in load, crush and bend tests. QUT university grip performance test resulting in a minimum 80% more grip in wet conditions, minimum 160% more grip in dry conditions and minimum 300% more grip in oily conditions.

Up to  
**300%**  
extra grip under  
oily conditions

Up to  
**160%**  
extra grip under  
dry conditions

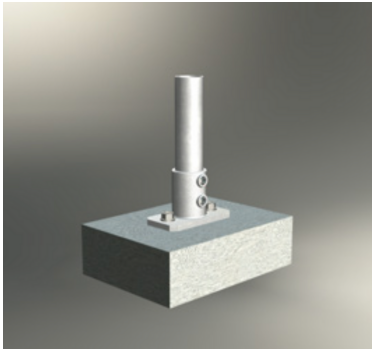
Up to  
**80%**  
extra grip under  
wet conditions



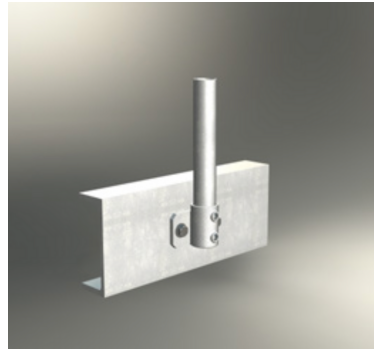
Acusafe develops the smartest solutions to maximize safety and assembly on worksites and in buildings, facilities, public transport, vehicles and vessels. Australian-based Acusafe have developed an innovative range of safety rail fixtures and fittings designed to outperform 'standard' products through research-inspired design. They work because they focus precisely on the intended purpose and changing conditions, and their superior safety solutions include the world-first KAG Safety Rail. This unique fixture has diverse applications from a bed rail to a shower rail, to a safety rail, hand rail and grab rail in any building, work environment, vehicle or vessel.



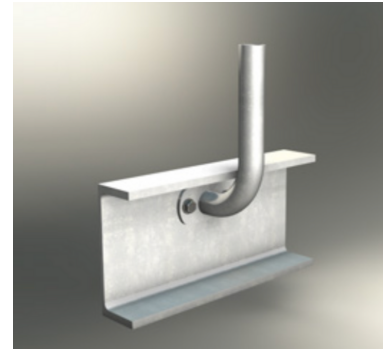
## CONNECT METHOD

**TOP CONNECTING**

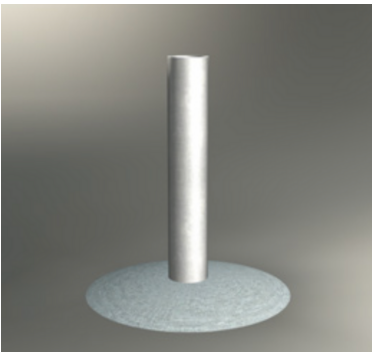
*Connect in to concrete ground or steel beam by 2 set of M12x100 anchor bolt or 2 set M14 high tensile scrow set*

**SIDE CONNECTING 1 (SC1)**

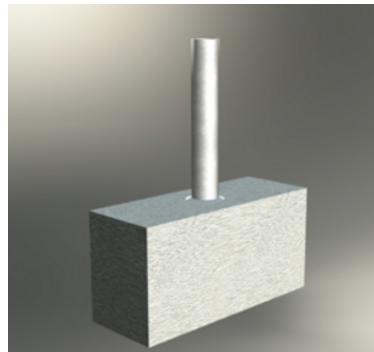
*Connect in to concrete ground or steel beam by 2 set of M12x100 anchor bolt or 2 set M14 high tensile scrow set*

**SIDE CONNECTING 1 (SC2)**

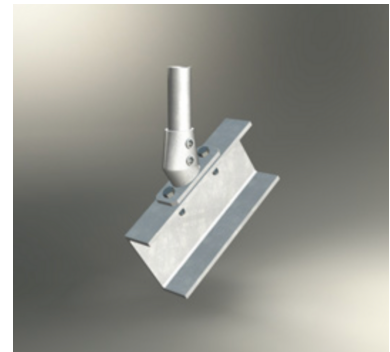
*Connect in to concrete ground or steel beam by 2 set of M12x100 anchor bolt or 2 set M14 high tensile scrow set*

**BURIED INTO GROUND (BIG)**

*Buried 500mm into ground, hole diameter 300x550mm*

**BURIED INTO CONCRETE (BIC)**

*Buried 200mm into concrete*

**ANGLE CONNECTING**

*Connect into steel beam by 2 set of M14 high tensile scrow set*

- There's many connect method that suitable to variety site condition



Focus PULL 200 Kg into middle of top rail  
within 2 minutes

SGS

STVS process handrail testing at SGS Vietnam:

Test content: Force 200 Kg into horizontal bars and post in every direction.

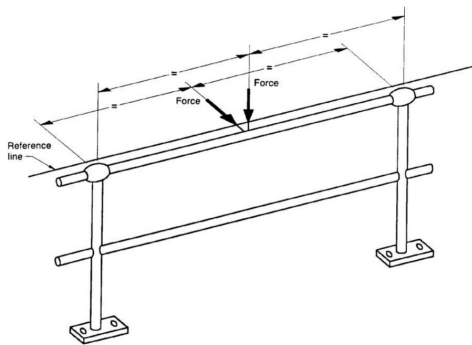


FIGURE C1 TYPICAL GUARDRAIL TEST

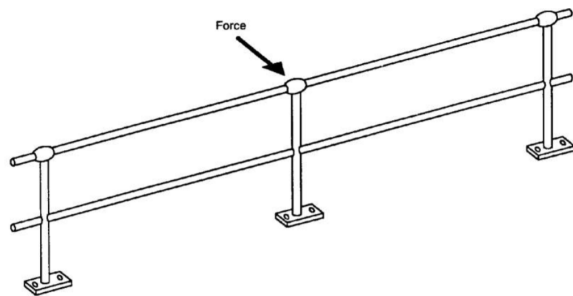


FIGURE B1 TYPICAL GUARDRAIL POST TEST

Test result:

Shape change less than 15mm within the test.

Handrail no change shape after testing

**The result excess any requirements of AZ1657, OSHA or BS EN ISO 14122-3 standrd for safety handrail.**



## Test Report

No. VNHL1907012485HG

Date: August 23, 2019

Page 1 of 6

## STVS CO., LTD

37 HOA MAI, WARD 2, PHU NHUAN DISTRICT, HO CHI MINH CITY, VIETNAM

The following sample(s) was/were submitted and identified by the client as:

SGS Job No. : VNHL1907012485HG

Sample Description : ASSEMBLY HANDRAIL "(LAN CAN LAP RAP)"

Color : "MA KEM" (GALVANIZED)

Characteristic : "THEP MA KEM NHUNG NONG"

Style / Item No. : CP32HB3P0G0

Date of Production : 06/2019

Manufacturer : STVS CO., LTD

Buyer : STVS CO., LTD

Country of Origin : VIET NAM

Country of Destination : WORLD WIDE

Other Information : ASSEMBLY HANDRAIL  
PIPE DIMENSION: 42.2x3.2mm  
POST CENTRE DISTANT: 1500mm  
HEIGHT: 1050mm  
HORIZONTAL BARS QUANTITY: 2 BARS  
ANCHOR BOLT: M12-100  
FINISHING: HOT DIP GALVANIZED  
MANUFACTURE: STVS CO., LTD

Sample Receiving Date : JULY 29, 2019

Final confirmed Date : JULY 29, 2019

Testing Period : JULY 29, 2019 TO AUGUST 05, 2019

Test Requested : SELECTED TEST (S) AS REQUESTED BY CLIENT.

Test Results : PLEASE REFER TO NEXT PAGE(S).

This document is issued by the Company subject to its General Conditions of Service printed overleaf, available on request or accessible at <http://www.sgs.com/en/Terms-and-Conditions.aspx> and, for electronic format documents, subject to Terms and Conditions for Electronic Documents at <http://www.sgs.com/en/Terms-and-Conditions/Terms-e-Document.aspx>.

Attention is drawn to the limitations of liability, indemnification and jurisdiction issues defined therein. Any holder of this document is advised that information contained hereon reflects the Company's findings at the time of its intervention only and within the limits of Client's instructions, if any. The Company's sole responsibility is to its Client and this document does not exonerate parties to a transaction from exercising all their rights and obligations under the transaction documents. This document cannot be reproduced except in full, without prior written approval of the Company. Any unauthorized alteration, forgery or falsification of the content or appearance of this document is unlawful and offenders may be prosecuted to the fullest extent of the law.

Unless otherwise stated the results shown in this test report refer only to the sample(s) tested and such sample(s) are retained for 90 days only.

SGS Vietnam Ltd

Office: 198 Nguyen Thi Minh Khai St, District 3, Ho Chi Minh City, Vietnam t (84-28) 3935 1920 f (84-28) 3935 1921 [www.sgs.com](http://www.sgs.com)  
Lab: Lot III/21, 19/5A St, Industrial Group III, Tan Binh IZ, Tan Phu District, HCMC, S.R. Vietnam t (84-28) 3816 0999 f (84-28) 3816 0996

Member of the SGS Group (SGS SA)

## STVS MODULAR

Address: 261-263 Phan Xich Long street, Ward 2, Phu Nhuan District, Ho Chi Minh City, 700000, Vietnam

<https://www.stvs.co/>



## Test Report

No. VNHL1907012485HG

Date: August 23, 2019

Page 2 of 6

Signed for and on behalf of  
SGS Vietnam LTD



**Wong Cho Wing**  
Hardline and E&E Lab Manager

This document is issued by the Company subject to its General Conditions of Service printed overleaf, available on request or accessible at <http://www.sgs.com/en/Terms-and-Conditions.aspx> and, for electronic format documents, subject to Terms and Conditions for Electronic Documents at <http://www.sgs.com/en/Terms-and-Conditions/Terms-e-Document.aspx>.

Attention is drawn to the limitations of liability, indemnification and jurisdiction issues defined therein. Any holder of this document is advised that information contained hereon reflects the Company's findings at the time of its intervention only and within the limits of Client's instructions, if any. The Company's sole responsibility is to its Client and this document does not exonerate parties to a transaction from exercising all their rights and obligations under the transaction documents. This document cannot be reproduced except in full, without prior written approval of the Company. Any unauthorized alteration, forgery or falsification of the content or appearance of this document is unlawful and offenders may be prosecuted to the fullest extent of the law.

Unless otherwise stated the results shown in this test report refer only to the sample(s) tested and such sample(s) are retained for 90 days only.

SGS Vietnam Ltd      Office: 198 Nguyen Thi Minh Khai St, District 3, Ho Chi Minh City, Vietnam t (84-28) 3935 1920 f (84-28) 3935 1921 [www.sgs.com](http://www.sgs.com)  
Lab: Lot III/21, 19/5A St, Industrial Group III, Tan Binh IZ, Tan Phu District, HCMC, S.R. Vietnam t (84-28) 3816 0999 f (84-28) 3816 0996

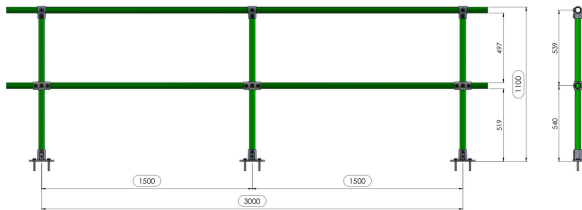
Member of the SGS Group (SGS SA)

## STVS MODULAR

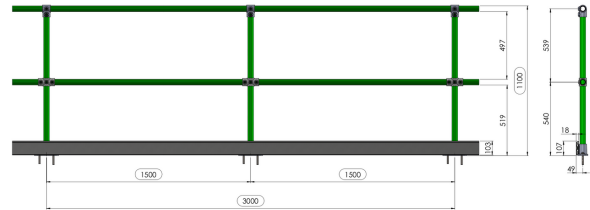
Address: 261-263 Phan Xich Long street, Ward 2, Phu Nhuan District, Ho Chi Minh City, 700000, Vietnam

<https://www.stvs.co/>

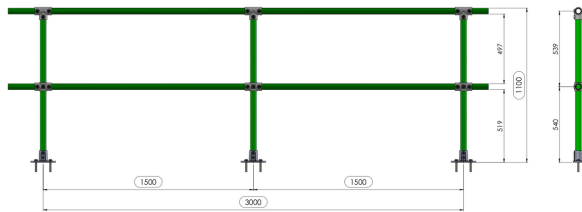
# TYPICAL TYPE OF HANDRAIL



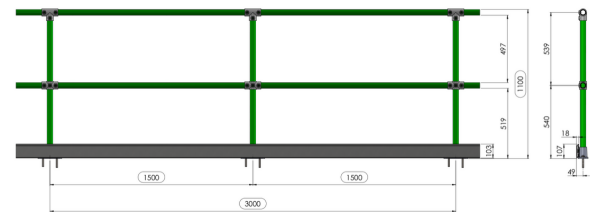
**HB2P0**



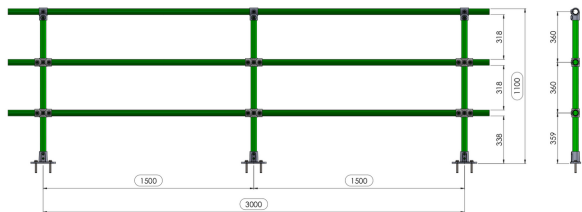
**HB2P1**



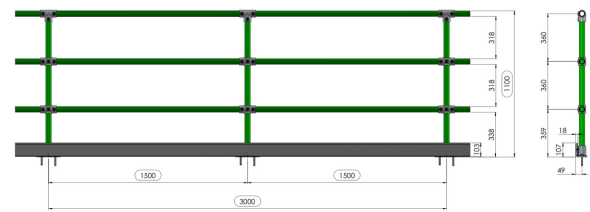
**HB2P0-S**



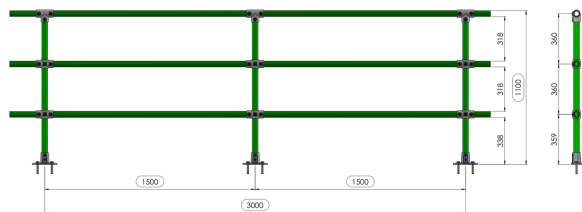
**HB2P1-S**



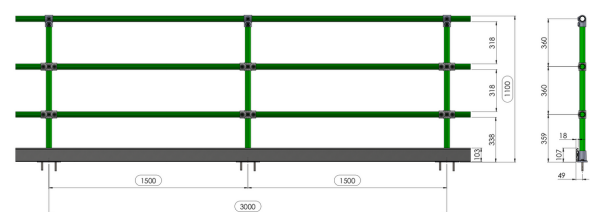
**HB3P0**



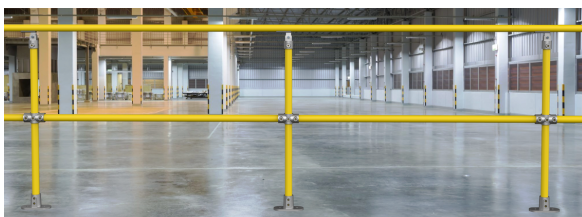
**HB3P1**



**HB3P0-S**



**HB3P1-S**

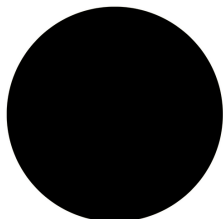


**HB2P0-ST**

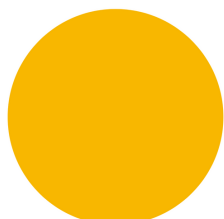


**HB3P0-ST**

## BASIC STANDARD COLOR

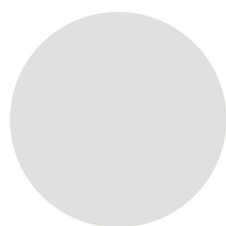


RAL9005

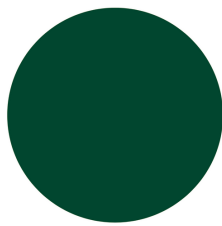


RAL1023

## ECONOMIC COLOR



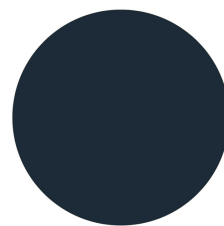
RAL7035



RAL6005



RAL9010

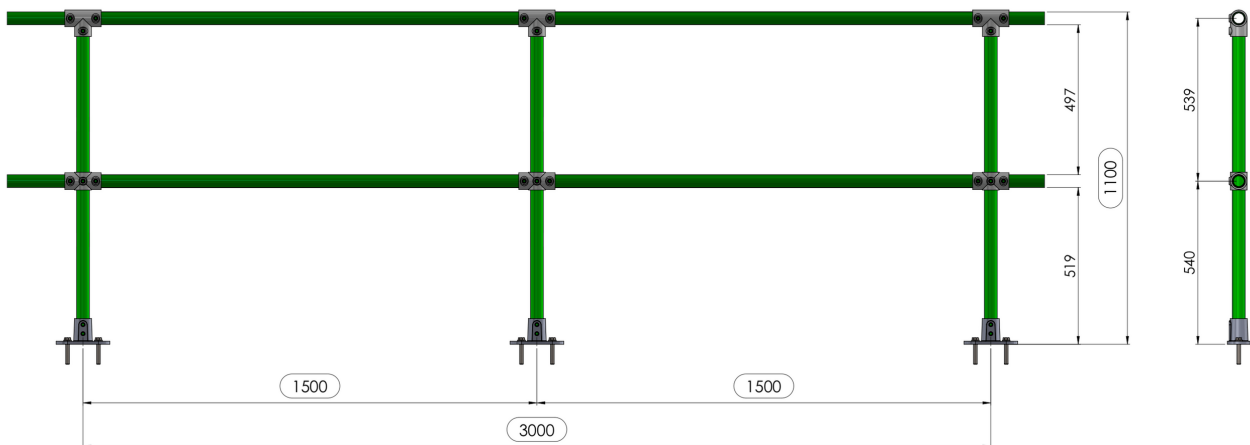


RAL7016

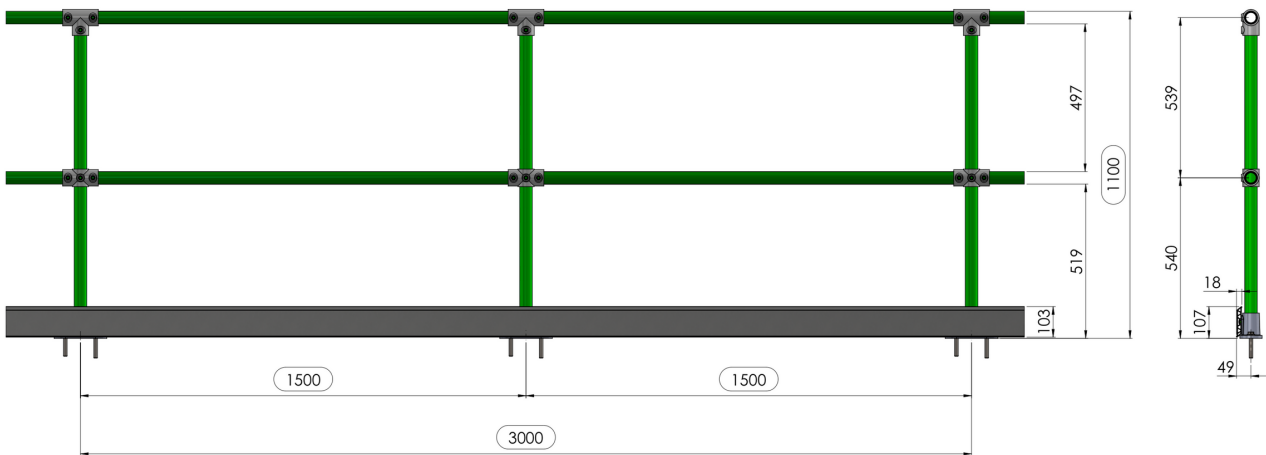
( If the quantity over 300ml for fence, RAL color systems can be applied as standard color)

## SLIDING GATE COLOR

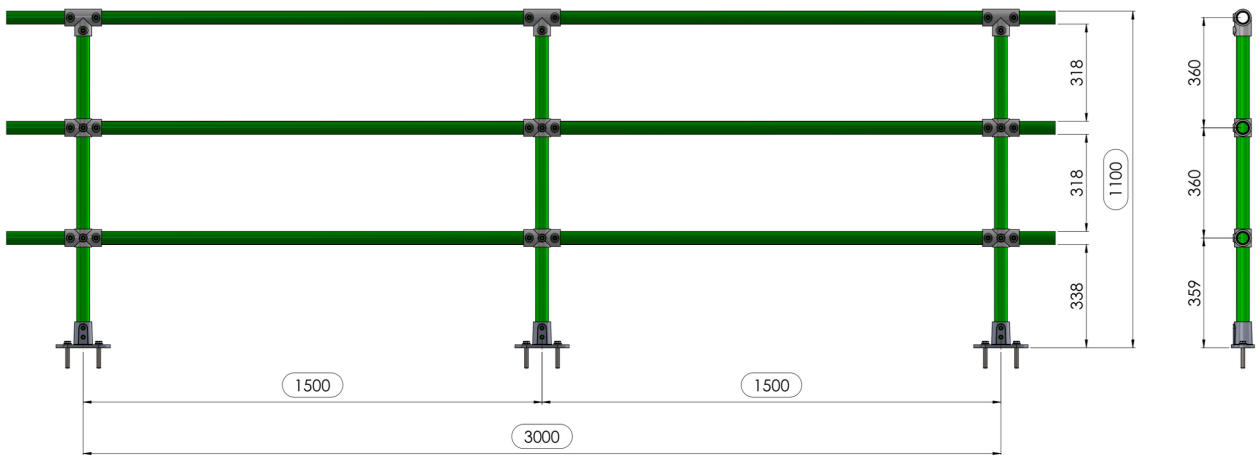
Gate system use PPG marine PU paint follow RAL code color.



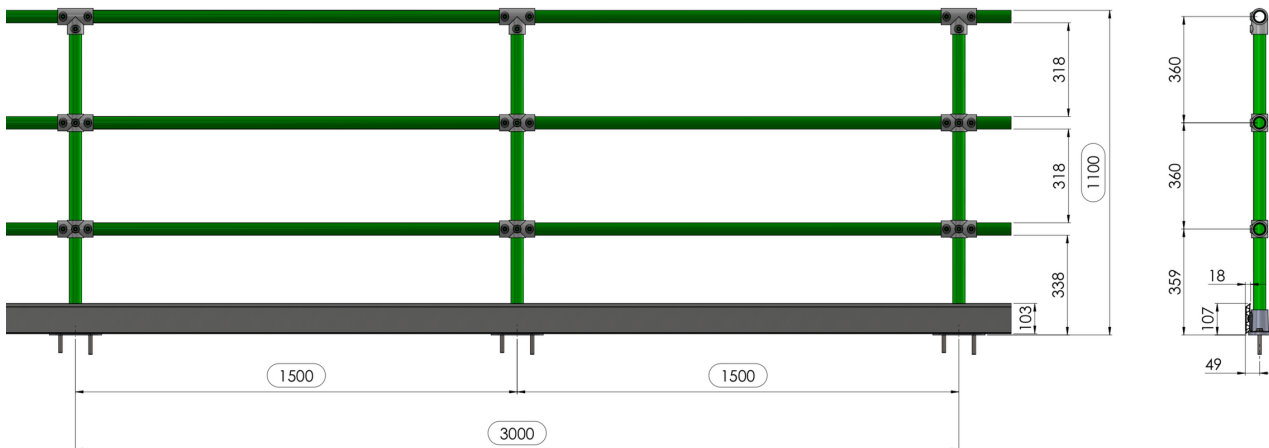
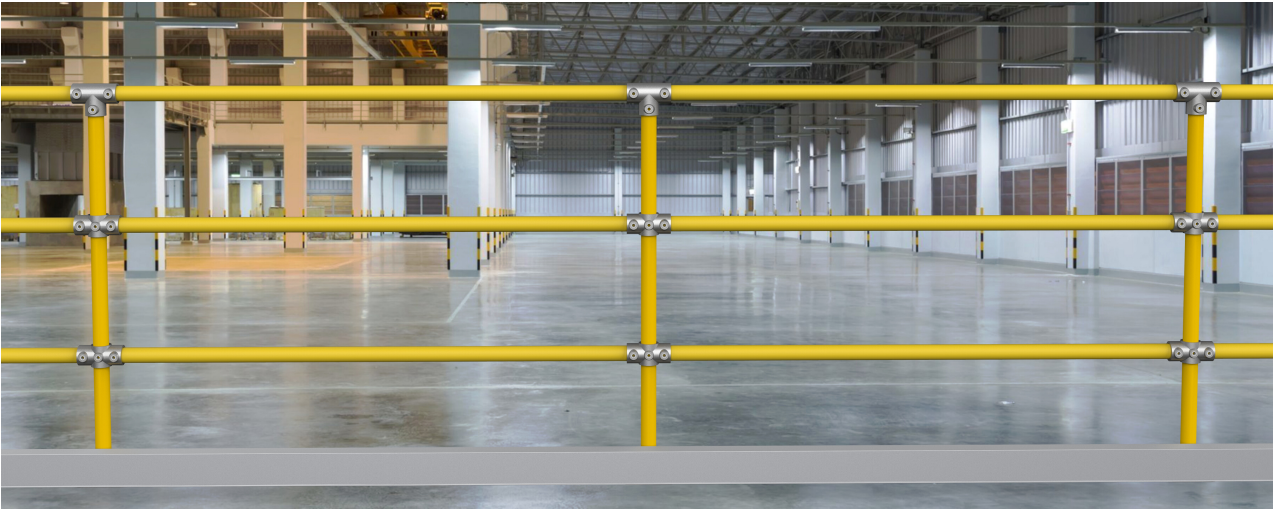
CODE	Horizontal bars quantity	WALL THICKNESS	Finishing	Post distant	Toe plate
CP32HB2P0G0	2	3.2mm	Black steel + PE powder coating paint	1.5m	
CP32HB2P0G1	2	3.2mm	Pre-galvanized steel + PE powder coating paint	1.5m	
CP32HB2P0G2	2	3.2mm	Hot dip galvanized	1.5m	
CP32HB2P0G3	2	3.2mm	Hot dip galvanized finishing + PE powder coating	1.5m	
CP20HB2P0G0	2	2.0mm	Black steel + PE powder coating paint	1.5m	
CP20HB2P0G1	2	2.0mm	Pre-galvanized steel + PE powder coating paint	1.5m	
CP20HB2P0G2	2	2.0mm	Hot dip galvanized	1.5m	
CP20HB2P0G3	2	2.0mm	Hot dip galvanized finishing + PE powder coating	1.5m	



CODE	Horizontal bars quantity	WALL THICKNESS	Finishing	Post distant	Toe plate
CP32HB2P1G0	2	3.2mm	Black steel + PE powder coating paint	1.5m	T
CP32HB2P1G1	2	3.2mm	Pre-galvanized steel + PE powder coating paint	1.5m	T
CP32HB2P1G2	2	3.2mm	Hot dip galvanized	1.5m	T
CP32HB2P1G3	2	3.2mm	Hot dip galvanized finishing + PE powder coating	1.5m	T
CP20HB2P1G0	2	2.0mm	Black steel + PE powder coating paint	1.5m	T
CP20HB2P1G1	2	2.0mm	Pre-galvanized steel + PE powder coating paint	1.5m	T
CP20HB2P1G2	2	2.0mm	Hot dip galvanized	1.5m	T
CP20HB2P1G3	2	2.0mm	Hot dip galvanized finishing + PE powder coating	1.5m	T



CODE	Horizontal bars quantity	WALL THICKNESS	Finishing	Post distant	Toe plate
CP32HB3P0G0	3	3.2mm	Black steel + PE powder coating paint	1.5m	
CP32HB3P0G1	3	3.2mm	Pre-galvanized steel + PE powder coating paint	1.5m	
CP32HB3P0G2	3	3.2mm	Hot dip galvanized	1.5m	
CP32HB3P0G3	3	3.2mm	Hot dip galvanized finishing + PE powder coating	1.5m	
CP20HB3P0G0	3	2.0mm	Black steel + PE powder coating paint	1.5m	
CP20HB3P0G1	3	2.0mm	Pre-galvanized steel + PE powder coating paint	1.5m	
CP20HB3P0G2	3	2.0mm	Hot dip galvanized	1.5m	
CP20HB3P0G3	3	2.0mm	Hot dip galvanized finishing + PE powder coating	1.5m	



CODE	Horizontal bars quantity	WALL THICKNESS	Finishing	Post distant	Toe plate
CP32HB3P1G0	3	3.2mm	Black steel + PE powder coating paint	1.5m	T
CP32HB3P1G1	3	3.2mm	Pre-galvanized steel + PE powder coating paint	1.5m	T
CP32HB3P1G2	3	3.2mm	Hot dip galvanized	1.5m	T
CP32HB3P1G3	3	3.2mm	Hot dip galvanized finishing + PE powder coating	1.5m	T
CP20HB3P1G0	3	2.0mm	Black steel + PE powder coating paint	1.5m	T
CP20HB3P1G1	3	2.0mm	Pre-galvanized steel + PE powder coating paint	1.5m	T
CP20HB3P1G2	3	2.0mm	Hot dip galvanized	1.5m	T
CP20HB3P1G3	3	2.0mm	Hot dip galvanized finishing + PE powder coating	1.5m	T



**STAIRCASE HANDRAIL**



**WALL ATTACHMENT HANDRAIL**

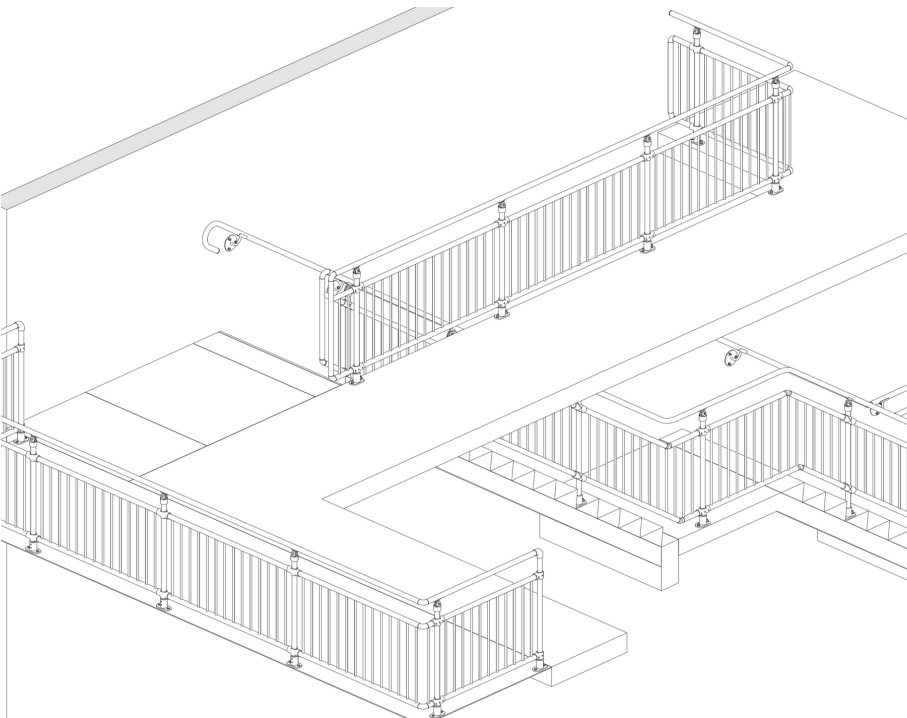
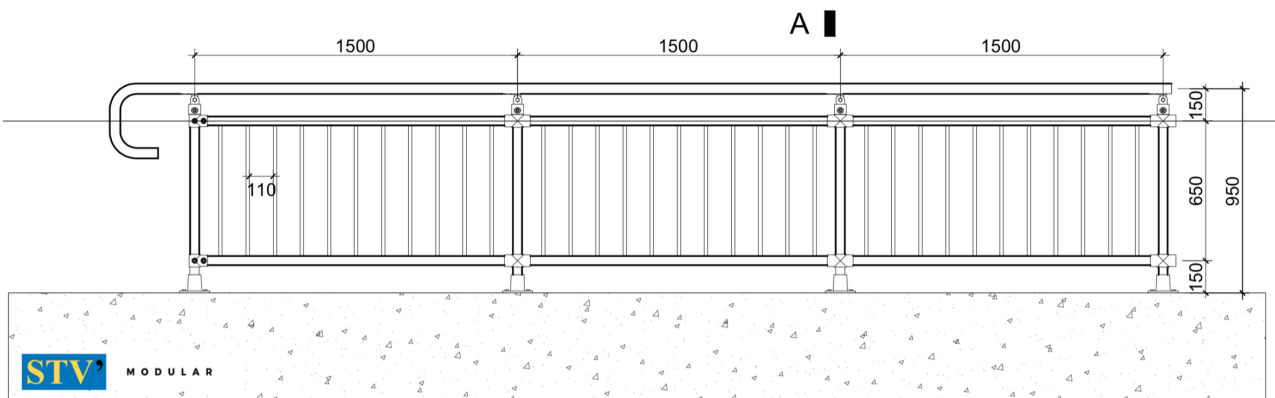
- COMPLIANCE TO OSHA 1910.29 STANDARD
- NICE DESIGN
- FLEXIBLE INSTALLATION
- EASY MAINTENANCE
- REDUCE CORROSION
- PRE-FABRICATED
- STRONG



## **STVS MODULAR**

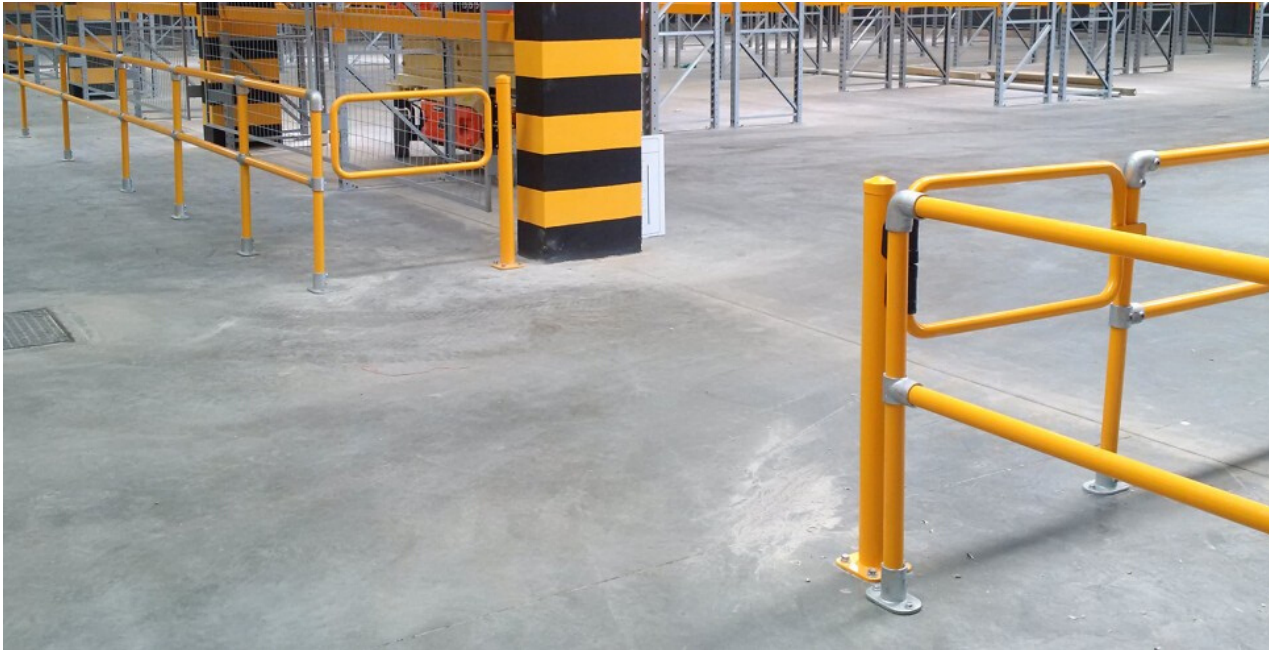
Address: 261-263 Phan Xich Long street, Ward 2, Phu Nhuan Distric, Ho Chi Minh City, 700000, Vietnam

<https://www.stvs.co/>



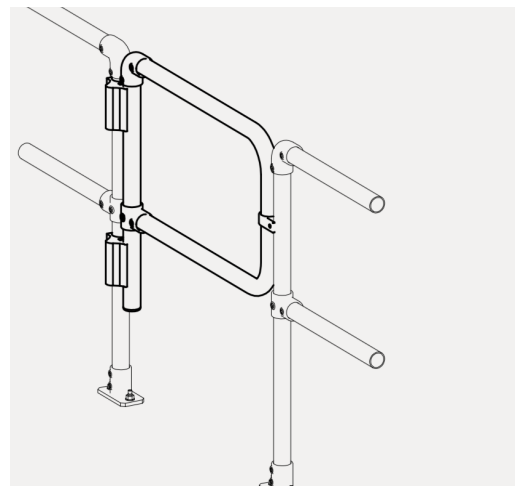
## APPLICATION

- Protective Fence
- School
- Balcony handrail
- Fire and exit staircase
- Sport centre
- Mezzanine and platform handrail



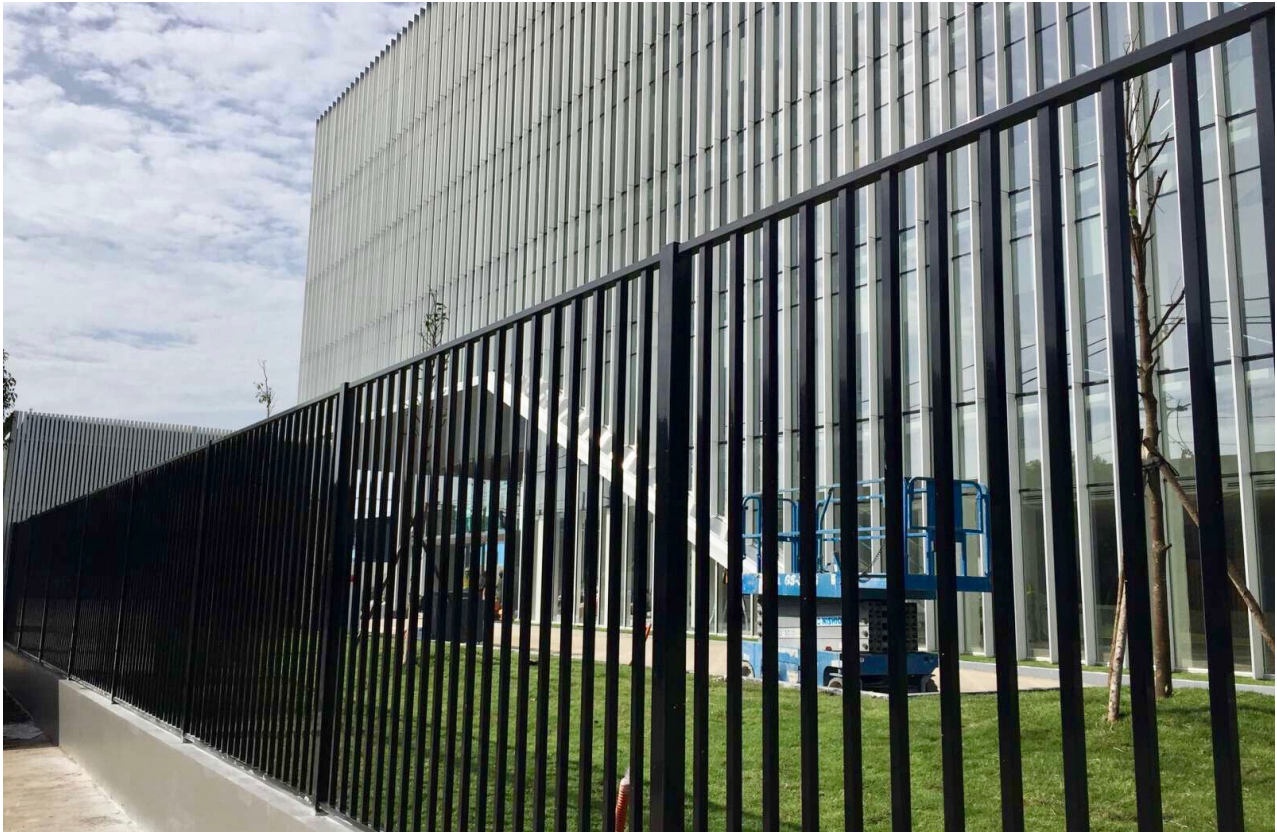
### PRODUCT FEATURE

- *Self closing safety gates provide protection for openings, ladders, stairs, rooftop hatches and controlled areas, where regular access for workers is needed. The gate can easily be fitted to existing systems where protected access is needed.*
- *The gate size can be customized of height and width, with finishing hot dip galvanized or powder coating paint.*
- **High quality adjustable hinge Australia made, with internal stainless steel spring and components**
- **Easy installation.**
- **Longe last operation**
- **Compliant to EN 14122-3 : 2016.**
- **NO NOISE WHEN OPERATION**



### TECNICAL SPECIFICATION:

- |                                    |  |
|------------------------------------|--|
| • <b>Brand</b>                     | STVS MODULAR   |
| • <b>Gate type:</b>                | Single/double  |
| • <b>Operation type:</b>           | Self closing   |
| • <b>Height:</b>                   | 1050mm   |
| • <b>Width:</b>                    | Max 1500mm for single gate<br>Max 3000mm for double gate |
| • <b>Pipe section:</b>             | D42x3.2mm  |
| • <b>Self-Closing Gate Weight:</b> | Up to 60kg   |
| • <b>Colour/Finish</b>             | Powder coating paint yellow traffic color                |



## PRODUCT FEATURE

- No damage the finishing coating in installation progress.
- No accessories request
- Minimum maintenance.
- Impossible to remove the panel once installed.
- Beautiful and nice appearance.
- Modular structure, assembly, factory finished, no painting at site.
- Fast installation.
- Galvanized profile in accordance with the international standard.
- High-adherence plastic coating super durable for outdoor.
- UV resistant.
- Color: Various follow RAL color standard, basic RAL 9010 (White) RAL 9005 (Black)
- Adaptable for all types of configurations: Curves, corners, slopes,....
- Applicable to all type of soil: Rock, sand...etc
- U structure of horizontal bars allow to paint both site of product, give extremely high corrosion quality.
- 10 years warranty for hot dip galvanized finish, 3 years warranty for PE powder coating paint finish up to C3 condition, 2 years warranty for C4 conditions.



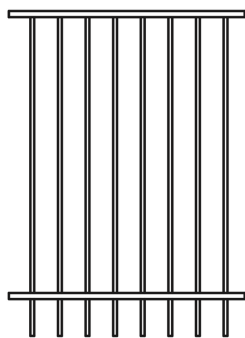
- PAINTED BOTH SIDE GIVE GOOD CORROSION RESISTANT
- HIDE WELDING POINT GIVE BEAUTIFUL APPEARANCE

	Technical Specification	
Nominal width (mm)	2500	3000
Material	Galvanized Steel Hot dip galvanized steel	
Horizontal bars section (mm)	41x21x2.0 41x21x1.5	
Horizontal bars quantity	2/3/4	
Filling bars section (mm)	16x16x1.2/20x20x1.2 16x16x1.5/20x20x1.5	
Filling bars distant (mm)	110mm	
Nominal height (mm)	1000/1200/1400/1500/1800/2000/2200	
Post section (mm)	60x60x2mm	
Finishing	Pre-Galvanized + PE Powder coating/ Hot dipgalvanized	
Warranty	10 years for hot dip glavanized (Up to C5 environment accroding to BS ISO 1944-2) 05 years for hot dip glavanized (Up to C5M environment accroding to BS ISO 1944-2) 2 years for paint finish (Up to C4 environment accroding to BS ISO 1944-2) 3 years for paint finish (Up to C2 environment accroding to BS ISO 1944-2)	

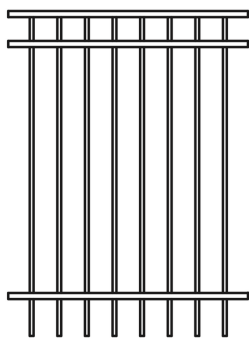
The anti-corrosion guarantee only covers rust-related faults. It is based on the European standard ISO 12944, which defines precise corrosivity categories.

Category	Typical environments in a temperate climate
C1 - Very low	interior applications only
C2 - Low	Atmospheres with low pollution levels – Rural areas
C3 - Medium	Urban and industrial atmospheres with moderate pollution

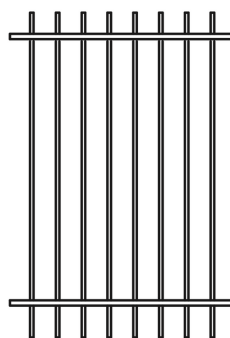
Category	Typical environments in a temperate climate	Distance between the products and the sea
C4	Industrial atmospheres with high sulphur dioxide pollution or coastal communities	Between 3 and 20km
C5	Aggressive industrial atmospheres (e.g. chemical industries) or atmospheres in coastal	Between 500m and 3km
C5-M	or maritime areas	< 500m



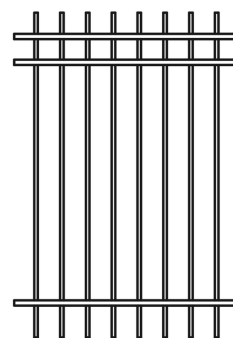
FT1



FT2



EP1



EP2

## FLAT TOP TYPE (FT)

## EXTENDED PICKET TYPE (EP)

Code	Horizontal bars quantity	Horizontal bars section (mm)	Infill section (mm)	Finishing	Post distant (mm)
------	--------------------------	------------------------------	---------------------	-----------	-------------------

## Infill 16x16 - Paint finishing

HBA2-S16T12-G1-2500	2	41x21x1.5mm	16x16x1.2mm	Pre-galvanized steel + PE Powder coating paint	2500
HBA3-S16T12-G1-3000	3	41x21x1.5mm	16x16x1.2mm	Pre-galvanized steel + PE Powder coating paint	3000
HBB2-S16T12-G1-2500	2	41x21x2.0mm	16x16x1.2mm	Pre-galvanized steel + PE Powder coating paint	2500
HBB3-S16T12-G1-3000	3	41x21x2.0mm	16x16x1.2mm	Pre-galvanized steel + PE Powder coating paint	3000

## Infill 20x20 - Paint finishing

HBA2-S20T12-G1-2500	2	41x21x1.5mm	20x20x1.2mm	Pre-galvanized steel + PE Powder coating paint	2500
HBA3-S20T12-G1-3000	3	41x21x1.5mm	20x20x1.2mm	Pre-galvanized steel + PE Powder coating paint	3000
HBB2-S20T12-G1-2500	2	41x21x2.0mm	20x20x1.2mm	Pre-galvanized steel + PE Powder coating paint	2500
HBB3-S20T12-G1-3000	3	41x21x2.0mm	20x20x1.2mm	Pre-galvanized steel + PE Powder coating paint	3000

## Infill 16x16 - Hot dip galvanized finishing

HBC2-S16T12-G2-2500	2	41x21x2.0mm	16x16x1.5mm	Hot dip galvanized	2500
HBC3-S16T12-G2-3000	3	41x21x2.0mm	16x16x1.5mm	Hot dip galvanized	3000

## Infill 20x20 - Hot dip galvanized finishing

HBC2-S20T12-G2-2500	2	41x21x2.0mm	20x20x1.5mm	Hot dip galvanized	2500
HBC3-S20T12-G2-3000	3	41x21x2.0mm	20x20x1.5mm	Hot dip galvanized	3000

- Other dimension be discussed case by case



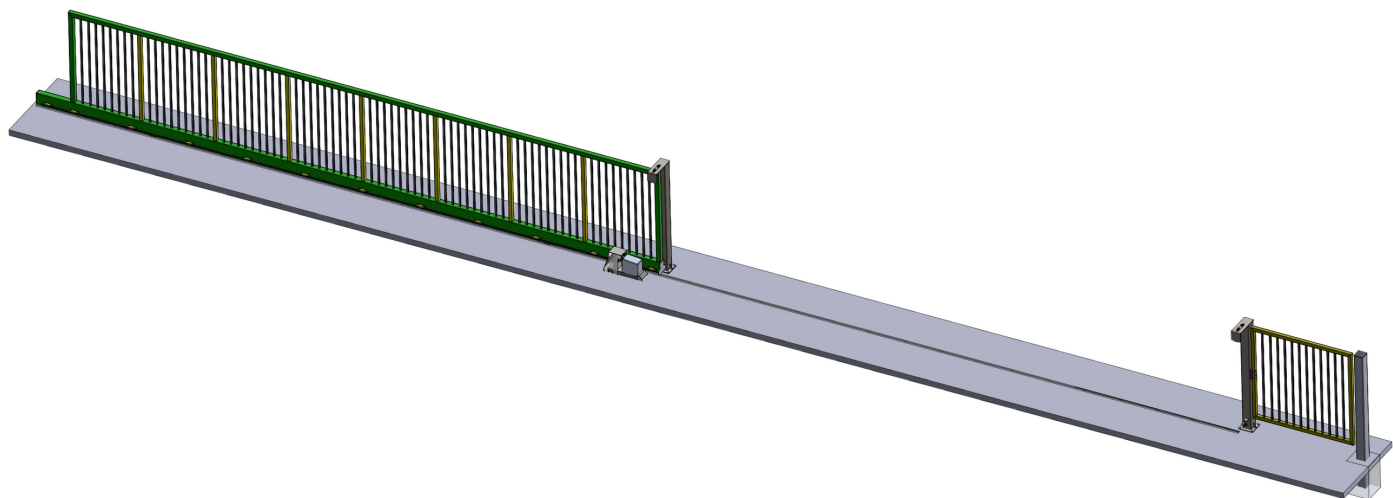
## PRODUCT FEATURES

- BEAUTIFUL STABLE AND DURABILITY
- High anti-corrosion surface coating with marine paint finishing.
- Reliable operation give minimum maintenance.
- Heavy duty and self support structure.
- Heavy duty wheel and guiding roller from EURO.
- Italy motor,
- Embedded support and rail structure give stable rail under heavy truck.
- Anti-lift function for high security
- Passage from 3m-12m
- Height from 1m ot 2.2m
- Optional infill: Square, round standard **(customized optional)**
- Color: Various follow RAL color standard
- Safety option with sensor and alarm light
- Manual or motorized versions
- Security sensor and alarm light combined (optional)
- STVS professional marine coating provide customer corrosion guarantee 3 years for C4, C5 environment. 05 years for C2, C3 environment (Environment compliance with ISO 12944-2).
- Installation on prepared site



### STVS MODULAR

Adress: 261-263 Phan Xich Long street, Ward 2, Phu Nhuan Distric, Ho Chi Minh City, 700000, Vietnam  
<https://www.stvs.co/>



Nominal Height (mm)	Post Length (mm)	Nominal Passage (mm)	3000	3500	4000	4500	5000	5500	6000
		Length of upper beam (mm)	3257	3710	4145	4725	5160	5740	6175
		Length of beam (mm)	3865	4300	4735	5315	5750	6330	6765
		Beam Section (mm)	150x100						
		Frame section (mm)	75x75						
1000	1500	Post cross section (mm)	100x100						
1200	1700								
1500	2000								
1800	2500								
2000	2700		120x120						
2200	2900		120x120				150x150		

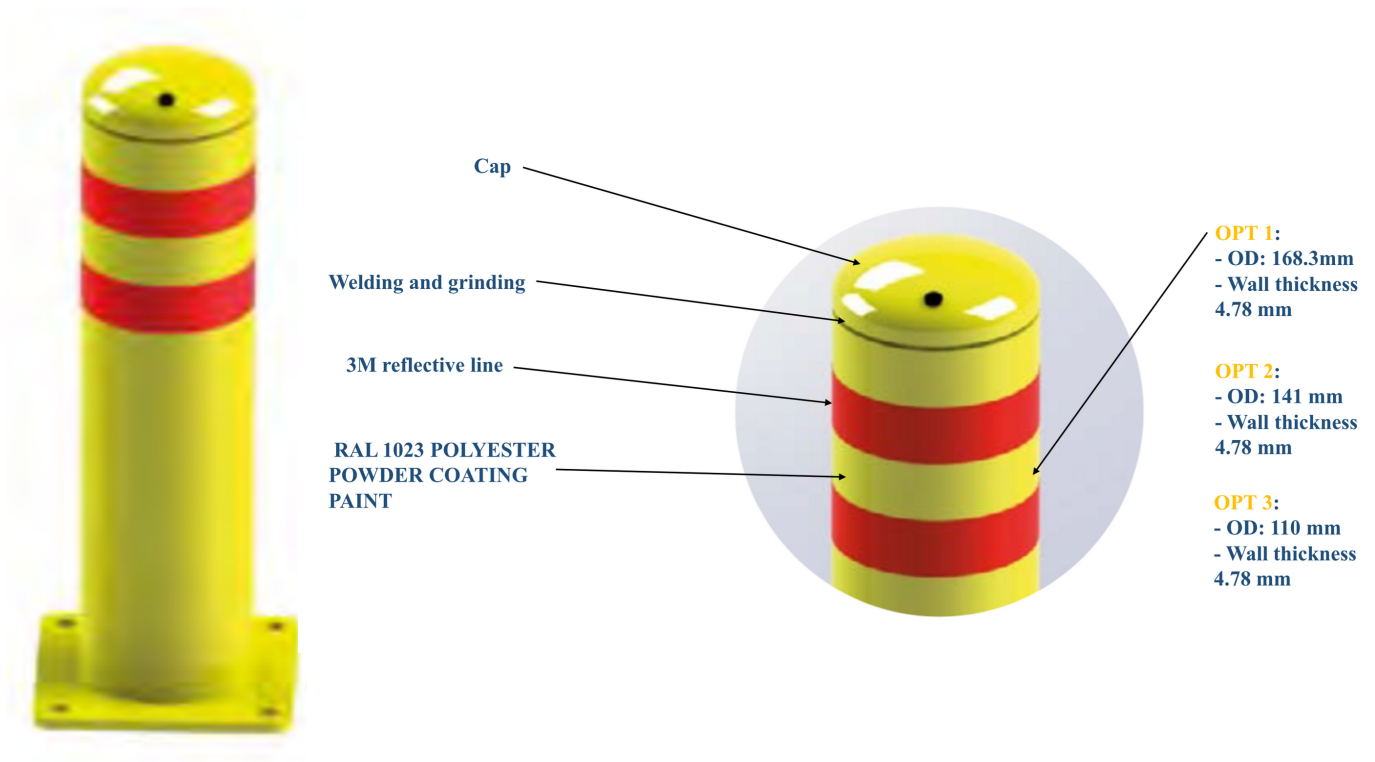
Nominal Height (mm)	Post Length (mm)	Nominal Passage (mm)	6500	7000	7500	8000	8500	9000	9500	10000	10500	11000	11500	12000		
		Length of upper beam (mm)	6775	7190	7770	8205	8640	9220	9655	10235	10670	11250	11685	12265		
		Length of beam (mm)	7345	7780	8630	8795	9230	9810	10245	10825	11260	11840	12275	12855		
		Beam Section (mm)	150x100							200x100						
		Frame section (mm)	75x75													
1000	1500	Post cross section (mm)	100x100													
1200	1700		100x100							120x120						
1500	2000		120x120							150x150						
1800	2500		150x150													
2000	2700		150x150													
2200	2900		150x150													

- Other dimension be discussed case by case

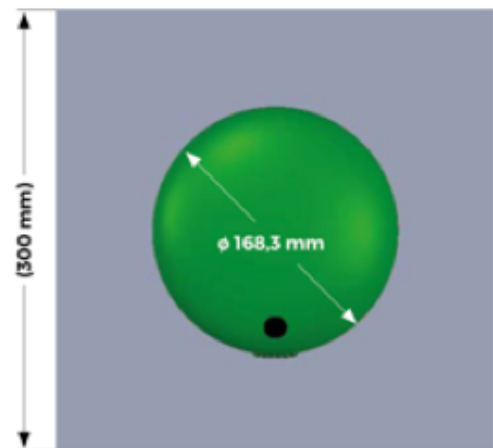
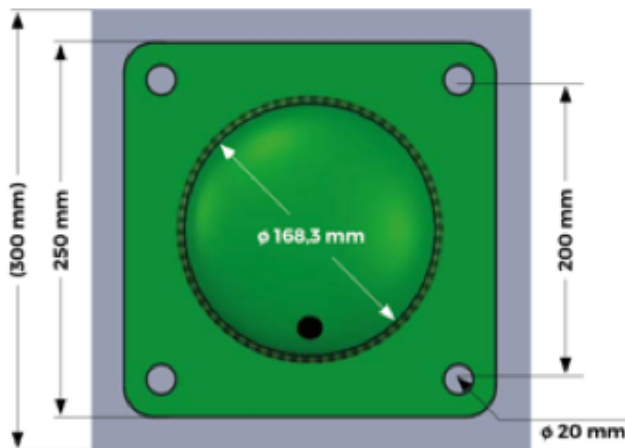
## STVS MODULAR

Adress: 261-263 Phan Xich Long street, Ward 2, Phu Nhuan Distric, Ho Chi Minh City, 700000, Vietnam

<https://www.stvs.co/>



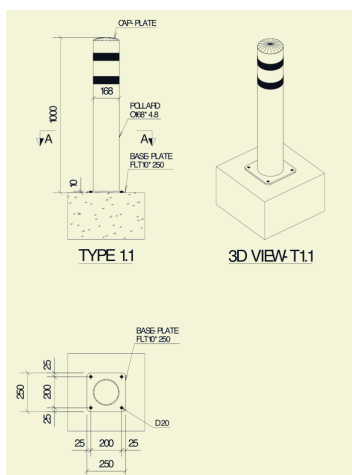
- Base plate thickness 10mm



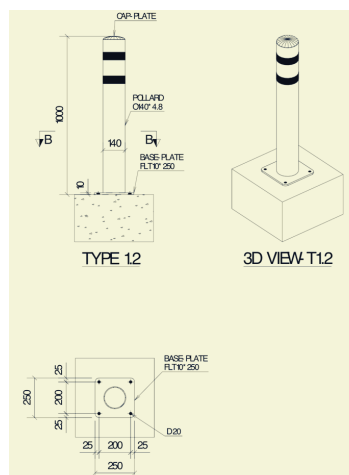
## PRODUCT FEATURE

Optional top fill concrete inside  
Optional install on flange or buried  
Anchor bolt: Hiti RE 100/500/1  
Flange thickness: 10mm Polyester powder coating paint finish  
Brand: STVS MODULAR

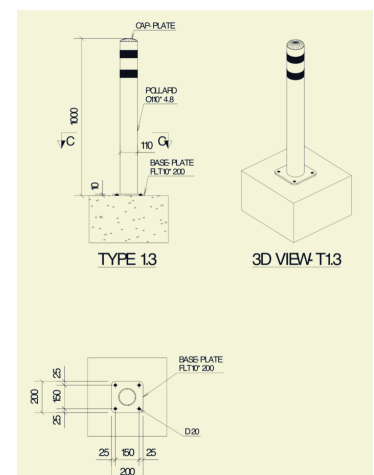
- **TRAFFIC YELLOW COLOR**
- **ELEGANT DESIGN**
- **HIGH QUALITY PAINTING APPLIED.**
- **HIGH QUALITY INFLECTIVE LINE**
- **WARRANTY UP TO 10 YEARS**



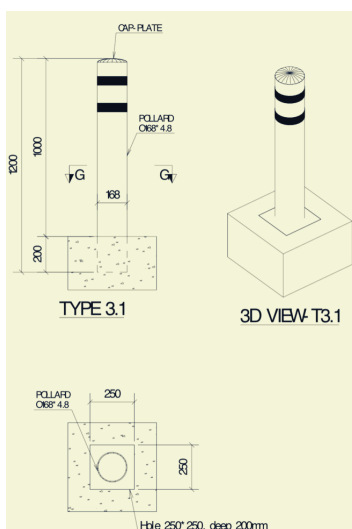
**BL168F**



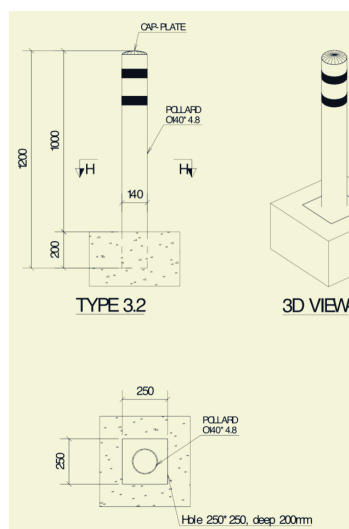
**BL141F**



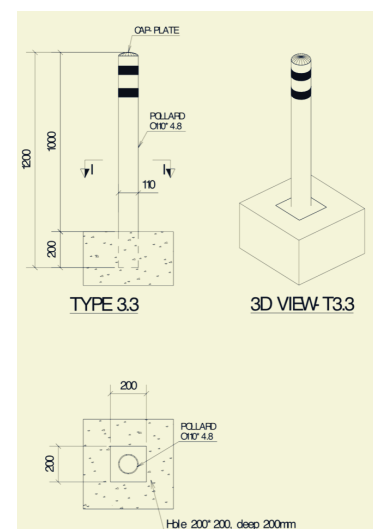
**BL110F**



**BL168B**



**BL141B**



**BL110B**

## STVS MODULAR

Address: 261-263 Phan Xich Long street, Ward 2, Phu Nhuan Distric, Ho Chi Minh City, 700000, Vietnam  
<https://www.stvs.co/>

CODE	Diameter (mm)	Wall thickness	Length (mm)	On flange	Finishing	Warranty
BL168FG0	168	4.8mm	1000	Yes	Black steel + Powder coating paint	3 Years
BL168FG2	168	4.8mm	1000	Yes	Hot dip galvanized	10 years
BL168FG3	168	4.8mm	1000	Yes	Hot dip galvanized + Powder coating paint	10 years
BL141FG0	141	4.8mm	1000	Yes	Black steel + Powder coating paint	3 Years
BL141FG2	141	4.8mm	1000	Yes	Hot dip galvanized	10 years
BL141FG3	141	4.8mm	1000	Yes	Hot dip galvanized + Powder coating paint	10 years
BL110FG0	110	4.8mm	1000	Yes	Black steel + Powder coating paint	3 Years
BL110FG2	110	4.8mm	1000	Yes	Hot dip galvanized	10 years
BL110FG3	110	4.8mm	1000	Yes	Hot dip galvanized + Powder coating paint	10 years
BL168BG0	168	4.8mm	1200	No	Black steel + Powder coating paint	3 Years
BL168BG2	168	4.8mm	1200	No	Hot dip galvanized	10 years
BL168BG3	168	4.8mm	1200	No	Hot dip galvanized + Powder coating paint	10 years
BL141BG0	141	4.8mm	1200	No	Black steel + Powder coating paint	3 Years
BL141BG2	141	4.8mm	1200	No	Hot dip galvanized	10 years
BL141BG3	141	4.8mm	1200	No	Hot dip galvanized + Powder coating paint	10 years
BL110BG0	110	4.8mm	1200	No	Black steel + Powder coating paint	3 Years
BL110BG2	110	4.8mm	1200	No	Hot dip galvanized	10 years
BL110BG3	110	4.8mm	1200	No	Hot dip galvanized + Powder coating paint	10 years

Category	Typical environments in a temperate climate
C1 - Very low	'interior applications only
C2 - Low	Atmospheres with low pollution levels – Rural areas
C3 - Medium	Urban and industrial atmospheres with moderate pollution

Category	Typical environments in a temperate climate	Distance between the products and the sea
C4	Industrial atmospheres with high sulphur dioxide pollution or coastal communities	Between 3 and 20km
C5	Aggressive industrial atmospheres (e.g. chemical industries) or atmospheres in coastal or maritime areas	Between 500m and 3km
C5-M		< 500m



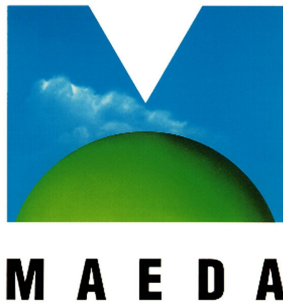
- Other dimension be discussed case by case



## PRODUCT FEATURE

- Design follow ISO 14122
- Pre-Engineering fabricated,
- Assembly.
- Installation service (Vietnam market only)
- Material: SUS 304/ Steel
- Customize is possible
- Flexible with floor





**GREENTECH ENVIRONMENT**  
TO IMPROVE THE QUALITY OF LIFE





[HTTPS://WWW.STVS.CO/](https://www.stvs.co/)

261-263 Phan Xich Long Street, Ward2, Phu  
Nhuan District, Hochiminh city, 700000,  
Vietnam  
Phone: +84 938770765

**STV<sup>9</sup>**

**M O D U L A R**